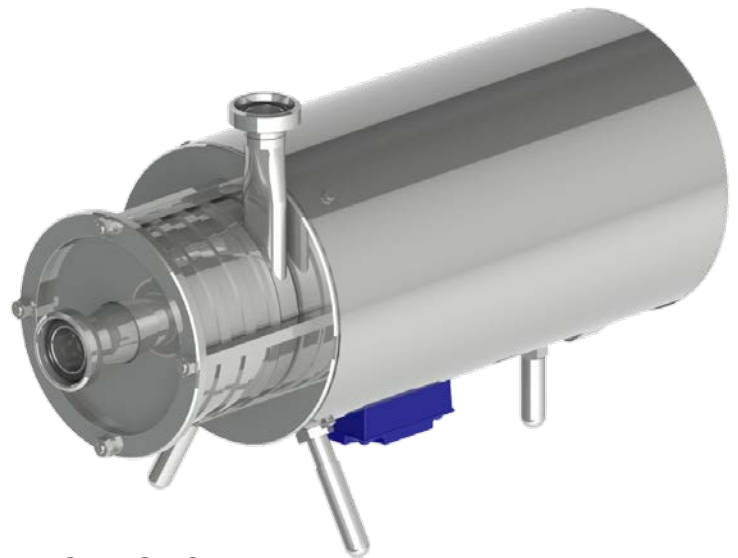


Unitech Multiple- Stage Centrifugal Pumps Series 170

Models PC170S

APPLICATION:

Find application in processes requiring low flow at high pressure of the pumping out fluid. Possibility for mounting of 2 to 6 working stages. Mounted impellers are of covered type.



STANDARD EQUIPMENT:

Block pump – directly joined to the shaft of the electric motor.

With protective engine cover, mounted on feet

Material AISI 304
Standard Inlet / Outlet: male union joints DIN 11851

OPTIONS:

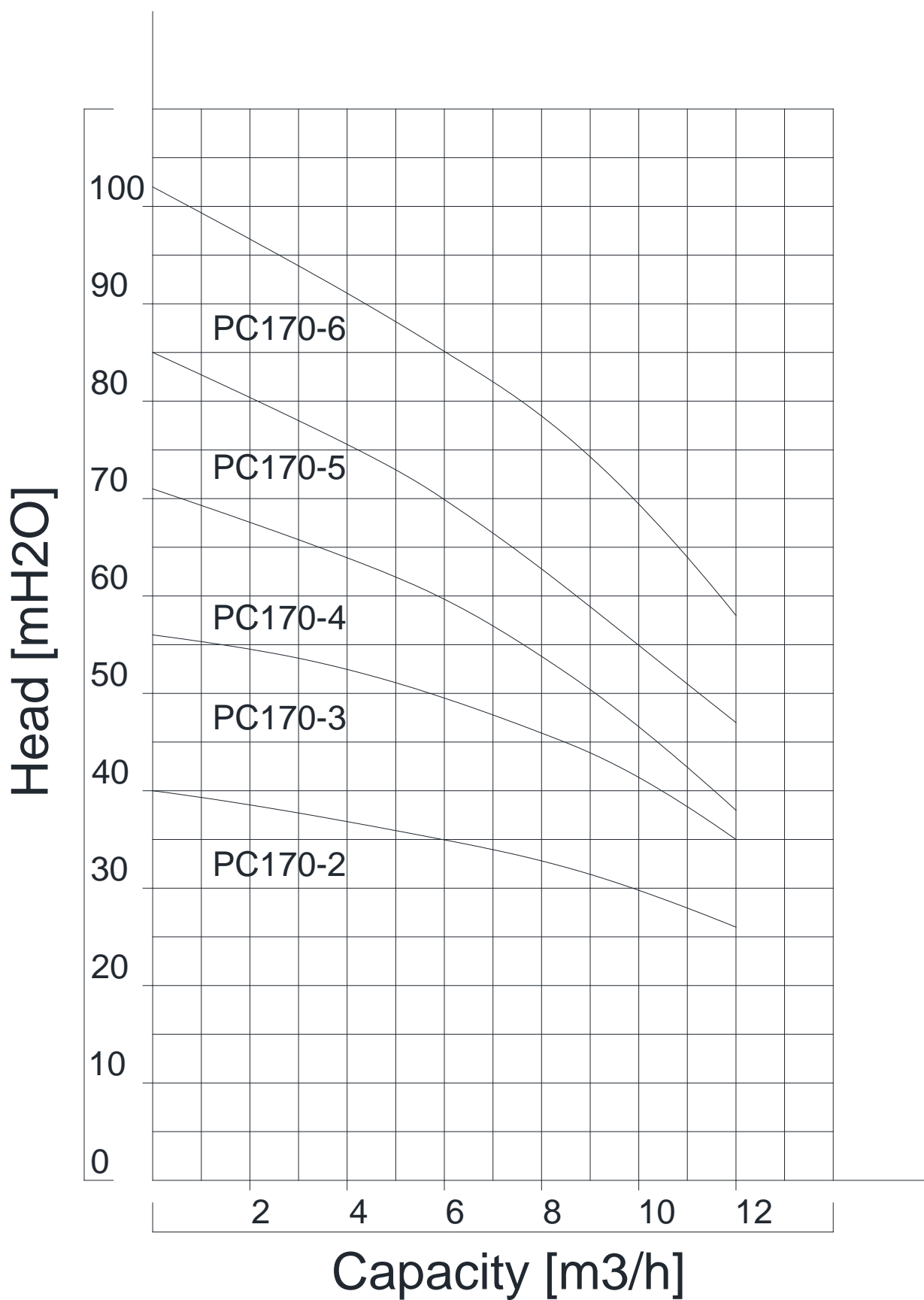
Material AISI 316

Connection: Garolla, SMS, Macon, Clamp, etc.

***Other Options on Request**

Technical Parameters							
Model	Capacity	Head	Electric Motor		Connection	Temperature	Weight
			kW	RPM			
PC170S-2	up to 12 m ³ /h	up to 3.5 bar	2.2	2820	male union joints DIN 11851	+2 ÷ +95°C	34 kg
PC170S-3	up to 12 m ³ /h	up to 5.5 bar	3.0	2820			40 kg
PC170S-4	up to 9 m ³ /h	up to 7.0 bar	3.0	2820			42 kg
PC170S-5	up to 2 m ³ /h	up to 8.5 bar	3.0	2820			44 kg
PC170S-6	up to 3 m ³ /h	up to 10.0 bar	3.0	2820			46 kg

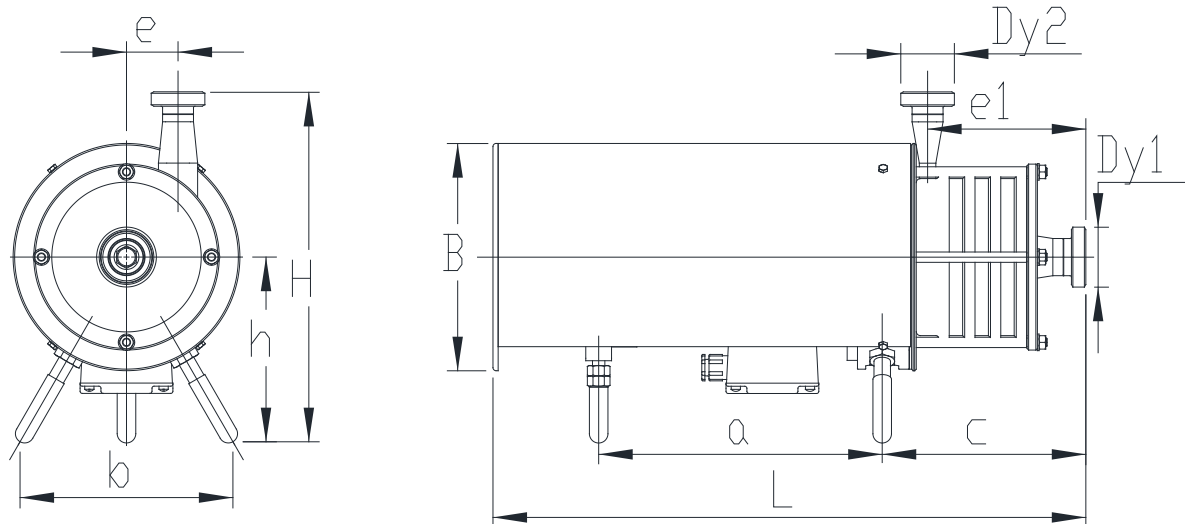
Characteristic Curves of the Unitech Multiple- Stage Centrifugal Pumps Series 170



*with fluid – water at temperature 20 °C.
 *with pipes equal with pump's connections.

Dimensions of the Unitech Multiple- Stage Centrifugal Pumps Series 170

Models PC170S



Dimensions, mm											
Model	Dy1	Dy2	L	B	H	h	b	e	e1	a	c
PC170S-2	32	25	525	220	325	180	180	50	100	260	140
PC170S-3			550						125		165
PC170S-4			575						150		190
PC170S-5			600						175		215
PC170S-6			625						200		240

6600 Kardzhali , Bulgaria
 East Industrial Zone
 Post box 187
 Tel: +35936166650
 Fax: +35936166651
 E-mail: unitech@unitech.bg
 Web: www.unitech.bg