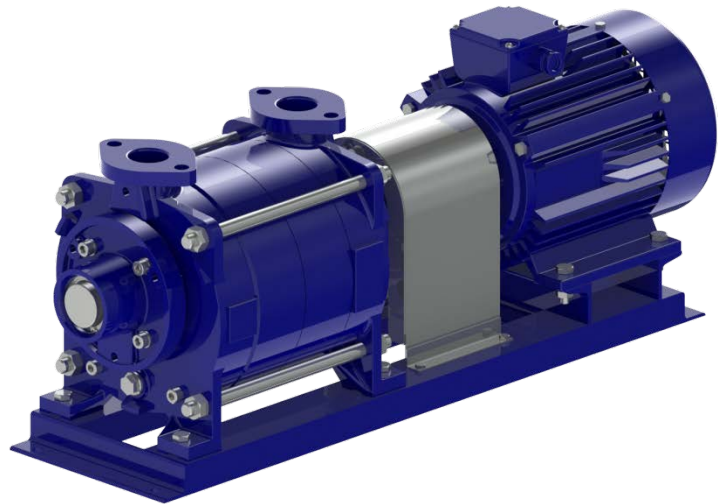


Unitech Vacuum Pumps Series 500

APPLICATION:

Vacuum pumps with water ring are designed for sucking out air gases, creating and maintaining definite rarefaction in various equipment and installations. Transported gases or liquid- gas mixtures should be non-flammable, chemically inactive and free of mechanical impurities.

APV4- PVD4 joined to a standard electric motor through a connector, mounted on frame.



STANDARD EQUIPMENT:

Vacuum pumps with water ring
PVD-4 - Two Stage Vacuum pump
 Material: Iron
 Standard Inlet / Outlet: Flanges

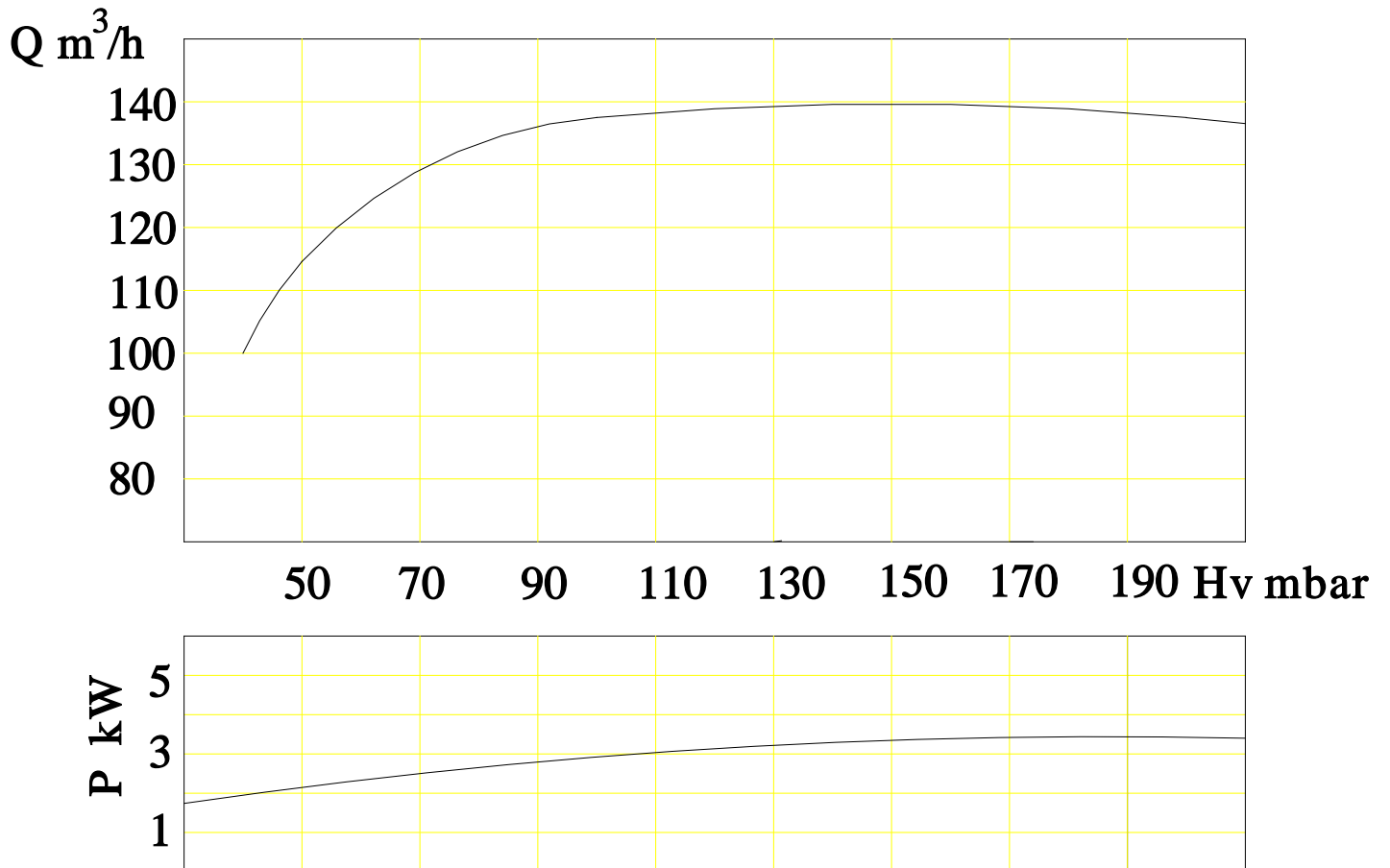
OPTIONS:

APV-4 – Two Stage Vacuum aggregate connected to a standard el. motor through a connector, mounted on a frame.

***Other Options on Request**

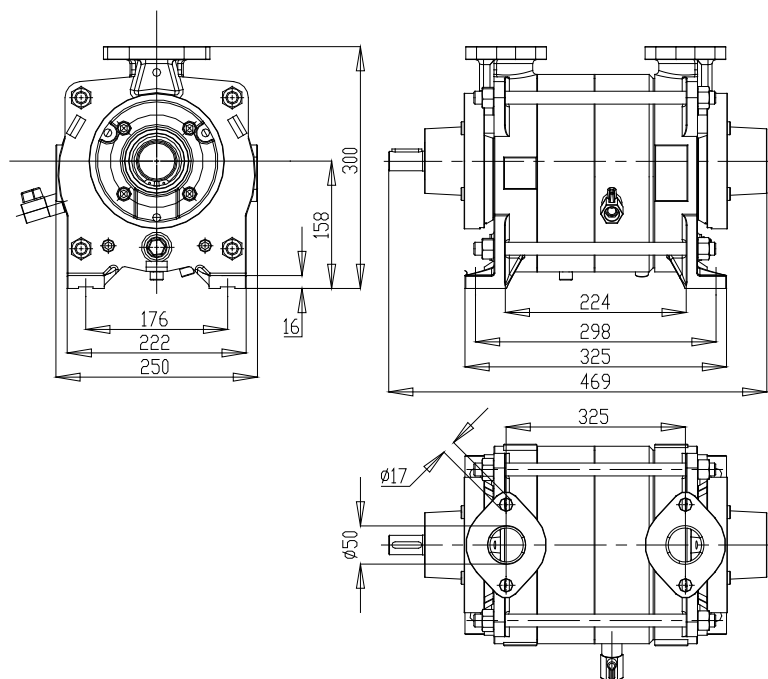
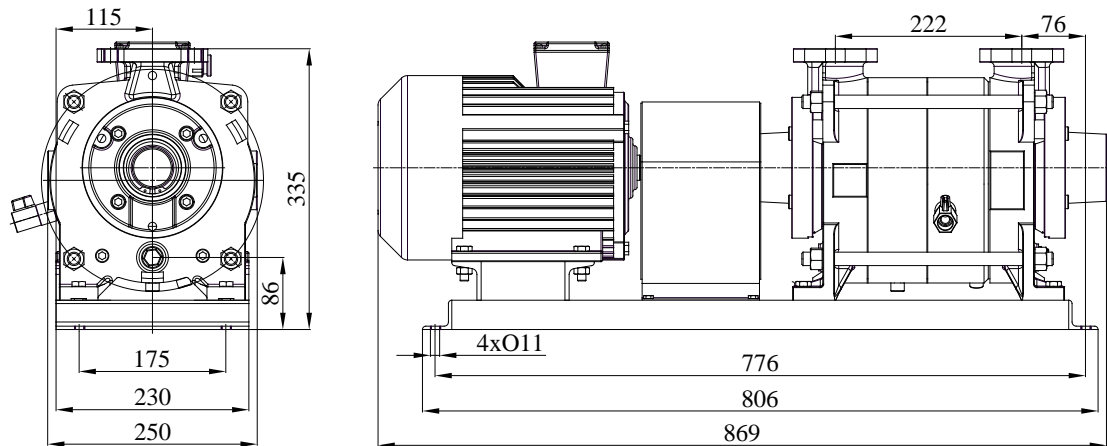
Technical Parameters							
Model	Capacity	Pressure	Electric Motor		Water consumption	Connection	Weight
			kW	RPM			
PVD 4	up to 135 m ³ /h	up to -0.85 bar	-	-	up to 8 l/min	Flanges	65 kg
APV 4			4.0	1420			115 kg

Characteristic Curves of the Unitech Vacuum Pumps Series 500



*with fluid – water at temperature 20 °C.
 *with pipes equal with pump's connections.

Dimensions of the Unitech Vacuum Pumps Series 500



6600 Kardzhali, Bulgaria
 East Industrial Zone
 Post box 187
 Tel: +35936166650
 Fax: +35936166651
 E-mail: unitech@unitech.bg
 Web: www.unitech.bg